

みんなで  
泊まる

*Educational Journeys, Comfortable Stays*

# School Trips with MIMARU



APARTMENT HOTEL  
MIMARU



APARTMENT HOTEL  
MIMARU

**Welcome to Apartment Hotel MIMARU**, a fresh option for enriching educational visits to Japan. If you're in search of unique experiences in a setting that's secure, spacious, and comfortable, we're pleased to offer an inviting alternative for educational journeys with both students and teachers.



## 1: Spacious Living Space

Our accommodations feature rooms that are 34sqm or larger, comfortably accommodating four or more individuals. It's not just a place to stay; it's a versatile space where students can relax, learn, and socialize.



## 2: Fully-Equipped Kitchens for Cultural Immersion

Each room comes with a fully-equipped kitchen, offering a unique opportunity for students to dabble in Japanese cuisine. Imagine the excitement of cooking a traditional Japanese meal for the first time!

7 hotels  
**KYOTO**

5 hotels  
**OSAKA**

15 hotels  
**TOKYO**



## 3: Convenient Locations Across Tokyo, Kyoto, and Osaka

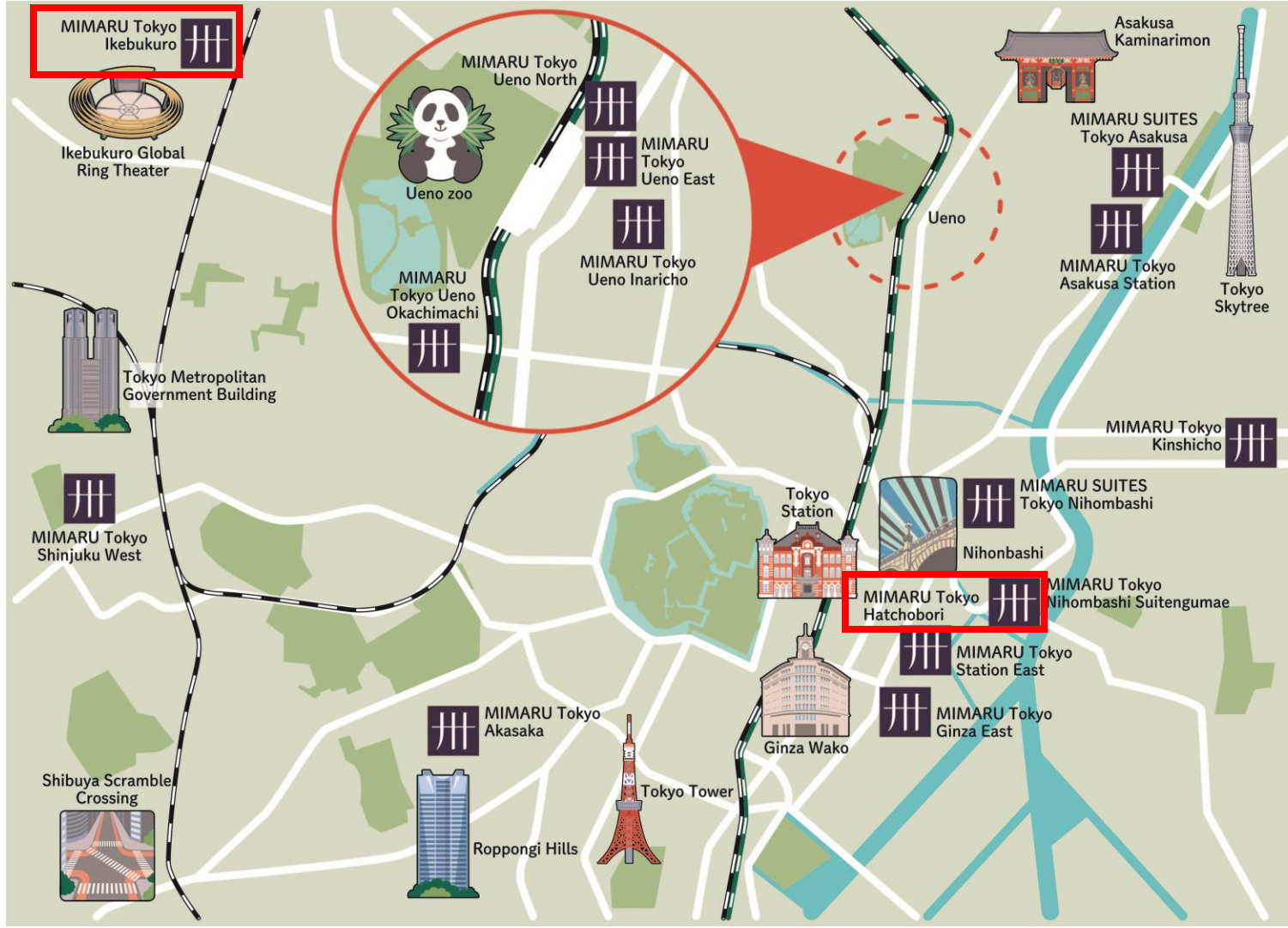
We have 27 facilities located in Tokyo, Kyoto, and Osaka. This ensures seamless integration with your travel itinerary, granting you easy access to historical landmarks, educational institutions, and vibrant local culture.





# MIMARU TOKYO IKEBUKURO





## MIMARU TOKYO HATCHOBORI

<https://mimaruhotels.com/en/hotel/hatchobori/>

## MIMARU TOKYO IKEBUKURO

<https://mimaruhotels.com/en/hotel/ikebukuro/>

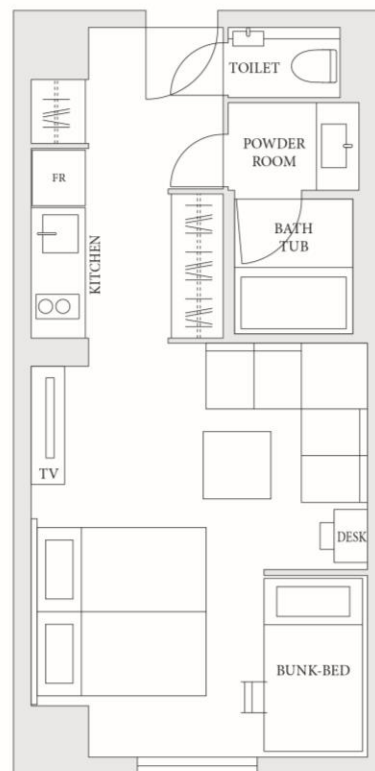
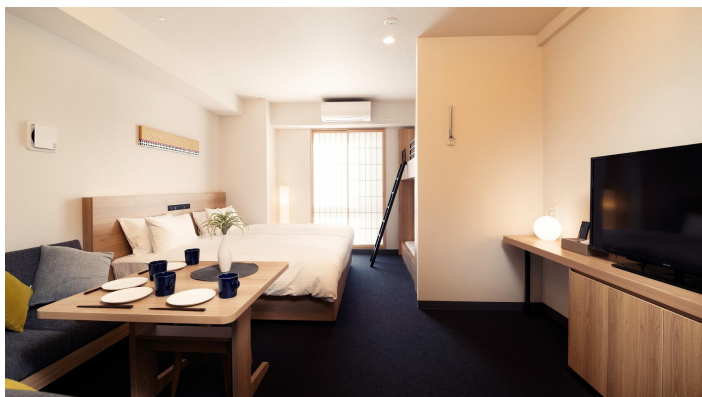
MIMARU東京八丁堀

# TOKYO HATCHOBORI

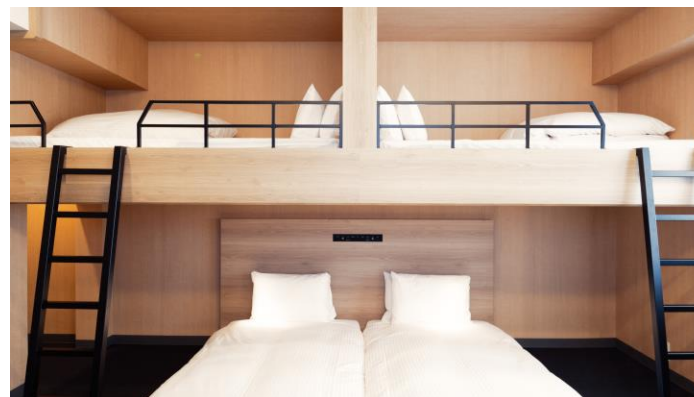
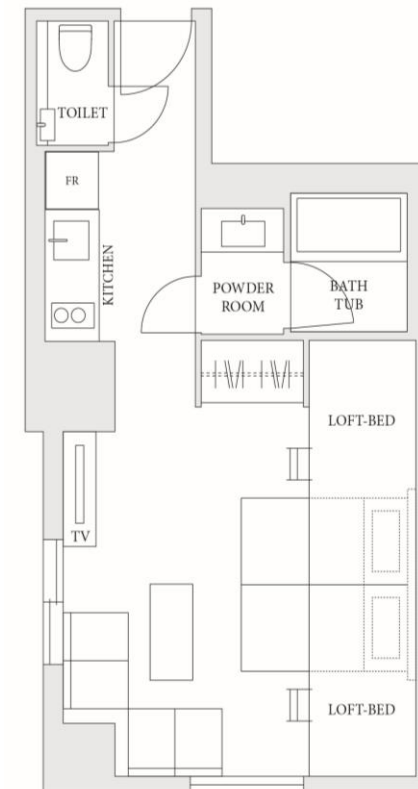
<https://mimaruhotels.com/en/hotel/hatchobori/>

Located conveniently near Tokyo Station, just a 15-minute walk away, this is an ideal choice for exploring the city's historic sites and museums. Easily accessible from JR Keiyo Line's Hatchobori Station, you can enjoy a direct 15-minute train ride to Maihama Station for Disneyland!!

## Family Apartment (38sqm: 2 single beds, 1 bunk)



## Loft Bed Apartment (38sqm: 2 single beds, 2 loft beds)





MIMARU東京八丁堀

# TOKYO HATCHOBORI

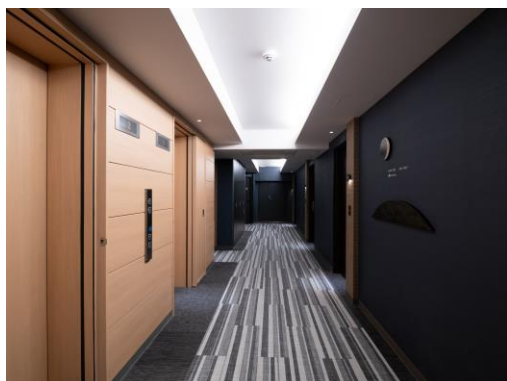
<https://mimaruhotels.com/en/hotel/hatchobori/>



Exterior view from outside the hotel



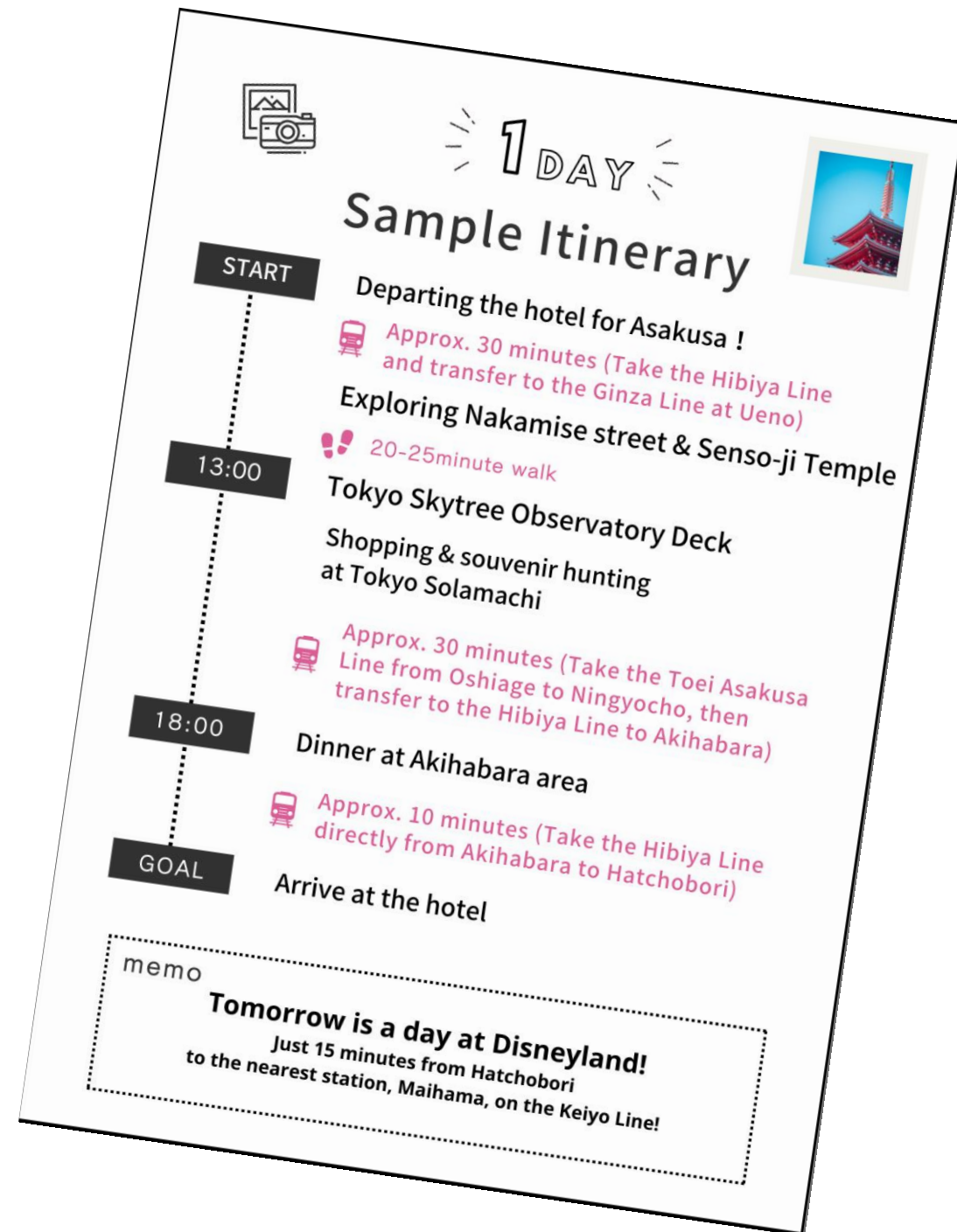
Check-in Counter



Corridor leading to guest rooms



Coin Laundry



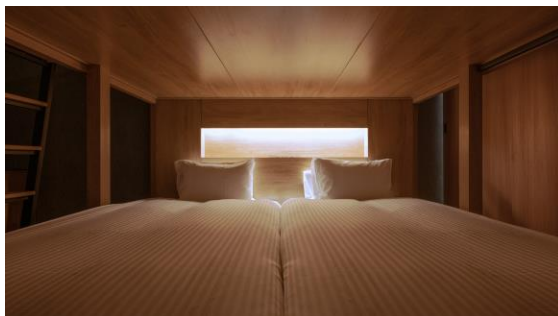
MIMARU東京池袋

# TOKYO IKEBUKURO

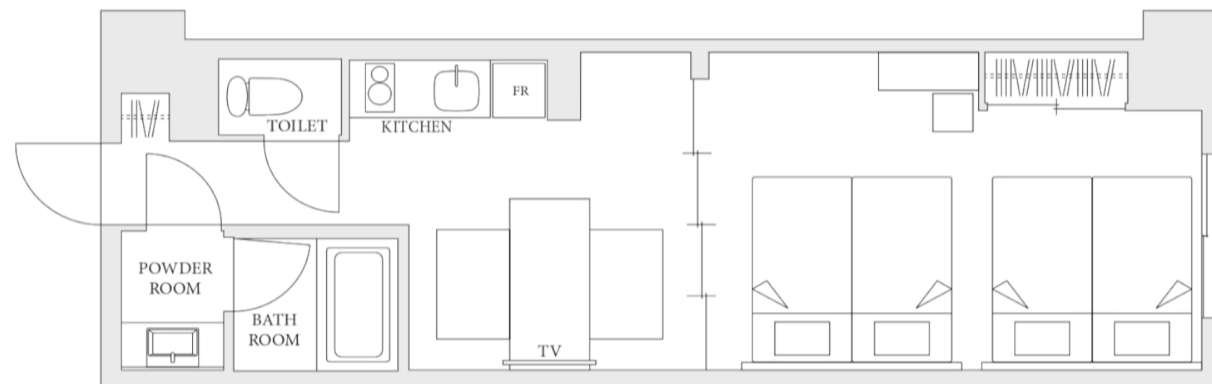
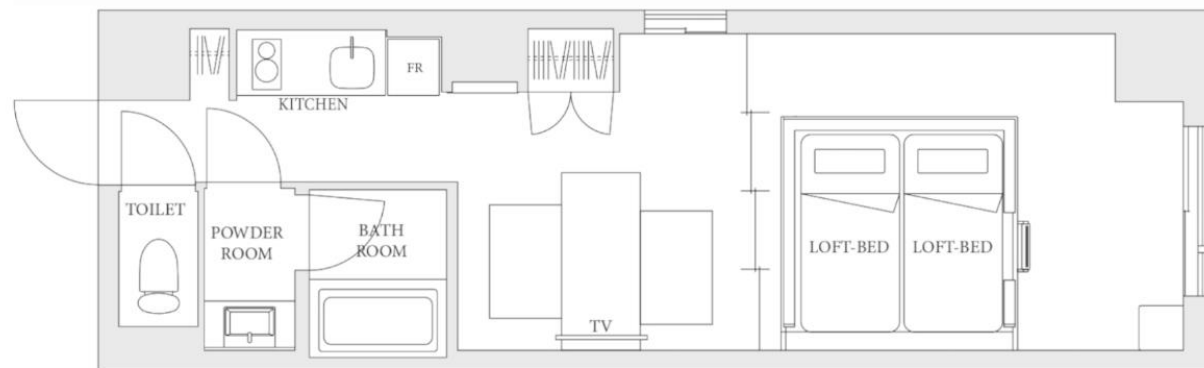
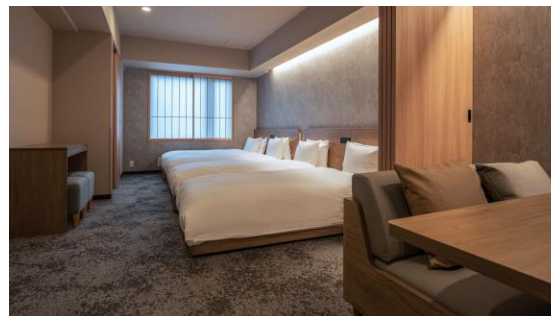
<https://mimaruhotels.com/en/hotel/ikebukuro//>

Just a 5-minute walk from JR Ikebukuro Station or your limousine bus stop, we are perfectly located for educational trips. Situated in Ikebukuro, a hotspot for manga and anime culture, our hotel offers easy access to landmarks like Sunshine City. It's an ideal base for exploring Tokyo's rich cultural landscape.

## One-Bedroom Loft Bed Apartment (39sqm: 2 loft beds, 2 futons)



## One-Bedroom Apartment (40sqm: 4 single beds)





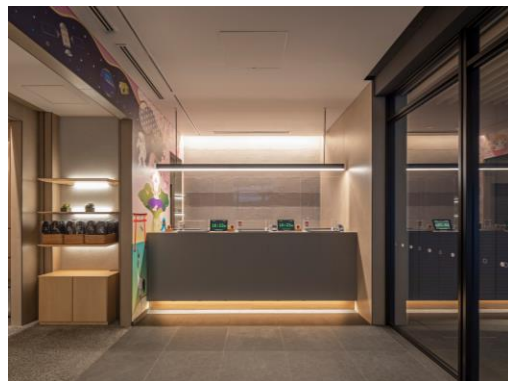
MIMARU東京池袋

# TOKYO IKEBUKURO

<https://mimaruhotels.com/en/hotel/ikebukuro//>



Exterior view from outside the hotel



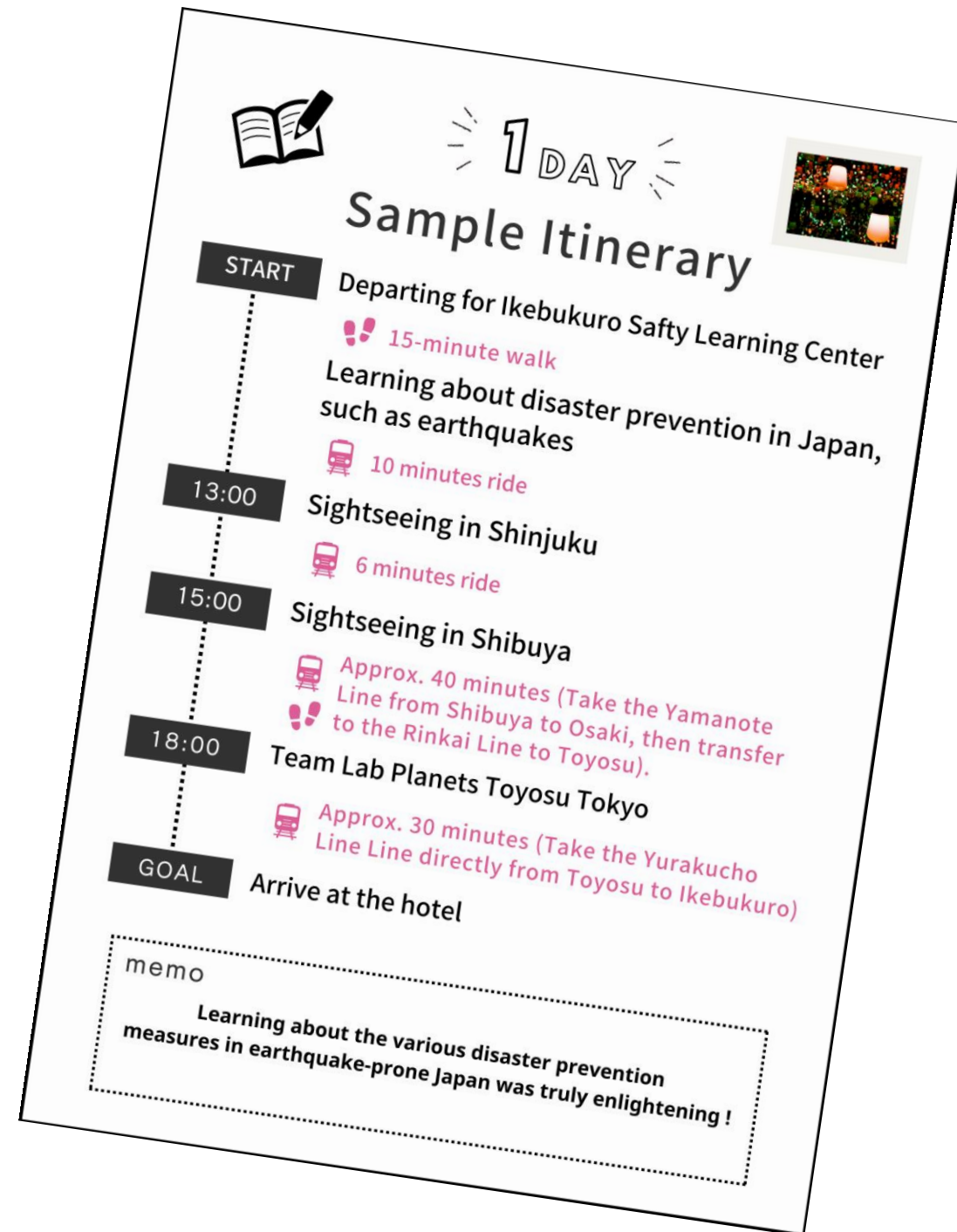
Check-in Counter



Coin Laundry Area



Accessible Apartment (41 sqm 4single beds)





# Recommended MIMARU Stays in KYOTO



MIMARU KYOTO  
KAWARAMACHI GOJO





MIMARU KYOTO

## KAWARAMACHI GOJO

<https://mimaruhotels.com/en/hotel/kawaramachi-gojo/>

MIMARU KYOTO

## SHINMACHI SANJO

<https://mimaruhotels.com/en/hotel/shinmachi-sanjo/>

---

MIMARU京都河原町五条

## KYOTO KAWARAMACHI GOJO

<https://mimaruhotels.com/en/hotel/kawaramachi-gojo/>

---

Located just one subway stop north of Kyoto Station, MIMARU Kyoto Kawaramachi Gojo is well-suited for educational trips. The hotel is a convenient 20-minute walk from historical landmarks like Kiyomizu Temple and the vibrant Gion district. For added accessibility, it's just a 3-minute walk to Keihan Gojo Station on the Keihan Line, offering easy transit to Osaka.

### Family Apartment

(40sqm: 2 single beds, 1 bunk)



### Japanese Apartment

(45sqm: 2 single beds, 3 futons)



### Apartment

(45sqm: 5 single beds)





MIMARU京都河原町五条

# KYOTO KAWARAMACHI GOJO

<https://mimaruhotels.com/en/hotel/kawaramachi-gojo/>



Exterior view from outside the hotel



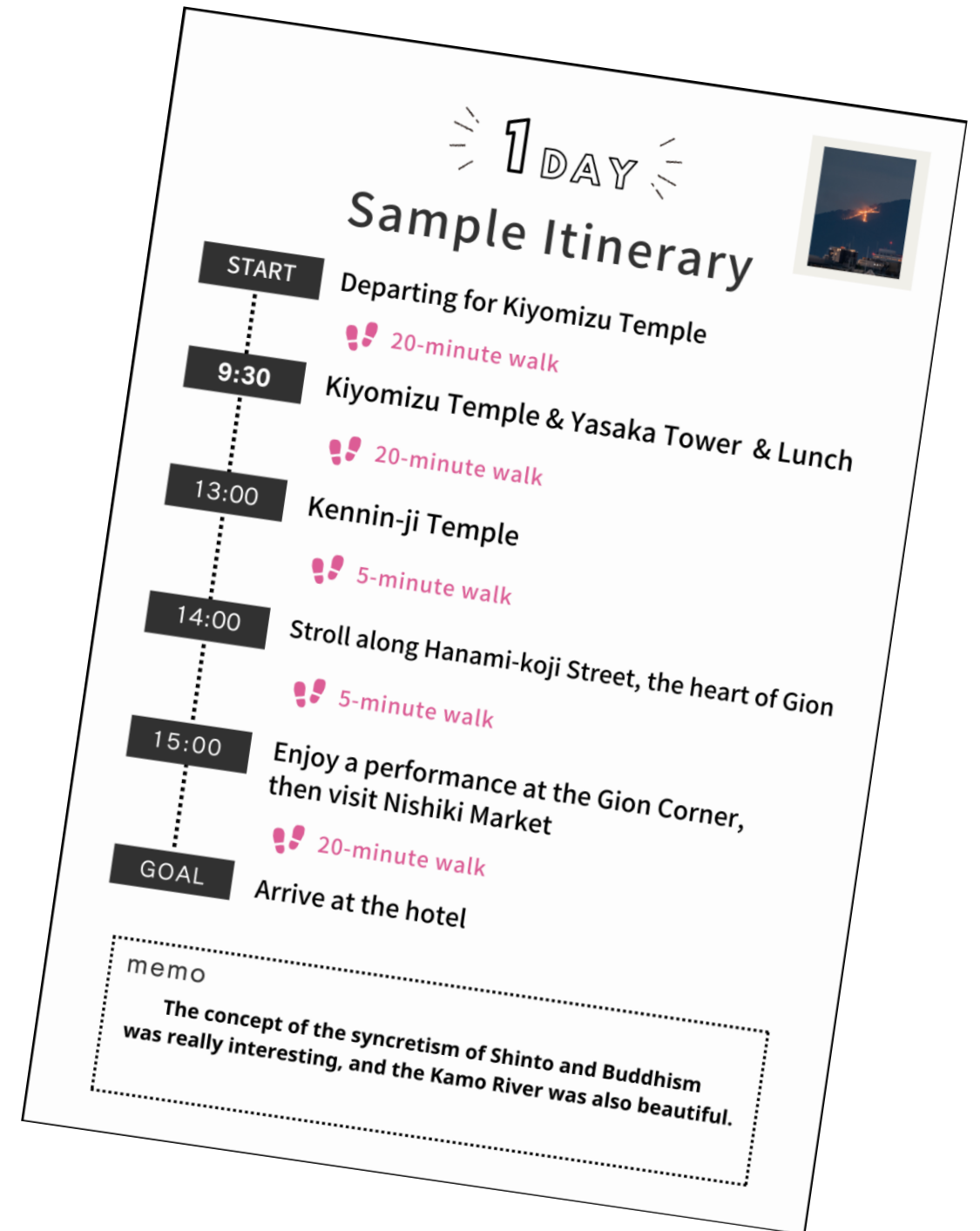
Check-in Counter



Entertainment Room



Luggage Storage Room



---

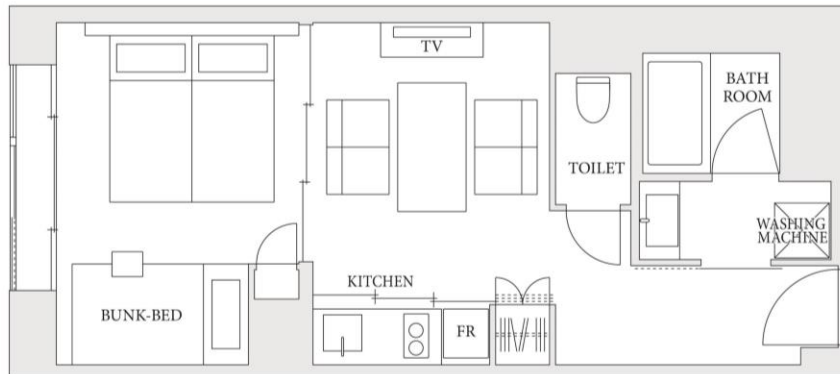
MIMARU京都新町三条

## KYOTO SHINMACHI SANJO

<https://mimaruhotels.com/en/hotel/shinmachi-sanjo/>

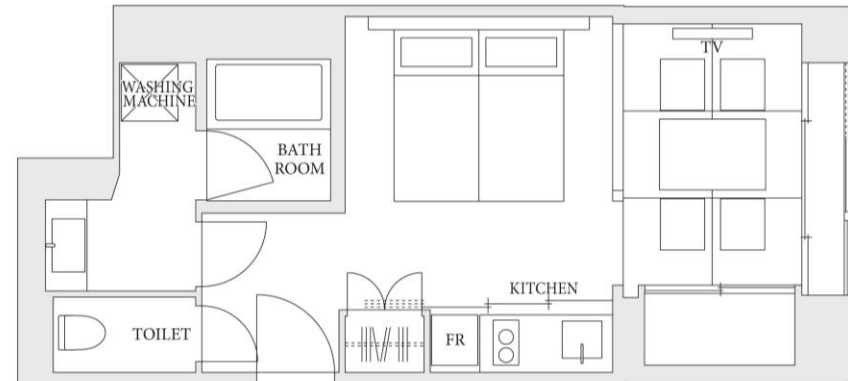
---

### One-Bedroom Family Apartment (38sqm: 2 single beds, 1 bunk)



Situated in a prime location, MIMARU Kyoto Shinmachi Sanjo offers convenient access for educational and cultural explorations. The hotel is within easy reach of iconic attractions such as Nijo Castle, Nishiki Market, and Gion Corner, making it a perfect base for students to experience Kyoto's rich history and vibrant culture.

### Japanese Apartment (35sqm: 2 single beds, 2 futon)





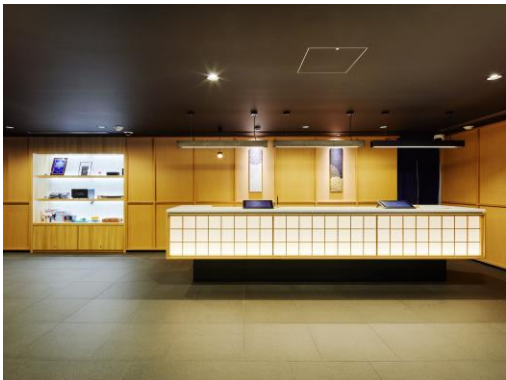
MIMARU京都新町三条

KYOTO SHINMACHI SANJO

<https://mimaruhotels.com/en/hotel/shinmachi-sanjo/>



Exterior view from outside the hotel




Check-in Counter



In room washer & dryer




Accessible Bathroom




1 DAY

Sample Itinerary




START

Departing for Nijo Castle

 15-minute walk


9:20

Nijo Castle

 20-minute ride


11:00

Kinkakuji Temple / Ryoanji Temple

 25-minute ride


14:00

Exploring the Bamboo Grove and crossing the Togetsukyo Bridge in Arashiyama

 10-minute walk

15:00

Iwatayama Monkey Park

 30-minute ride

GOAL

Arrive at the hotel

memo

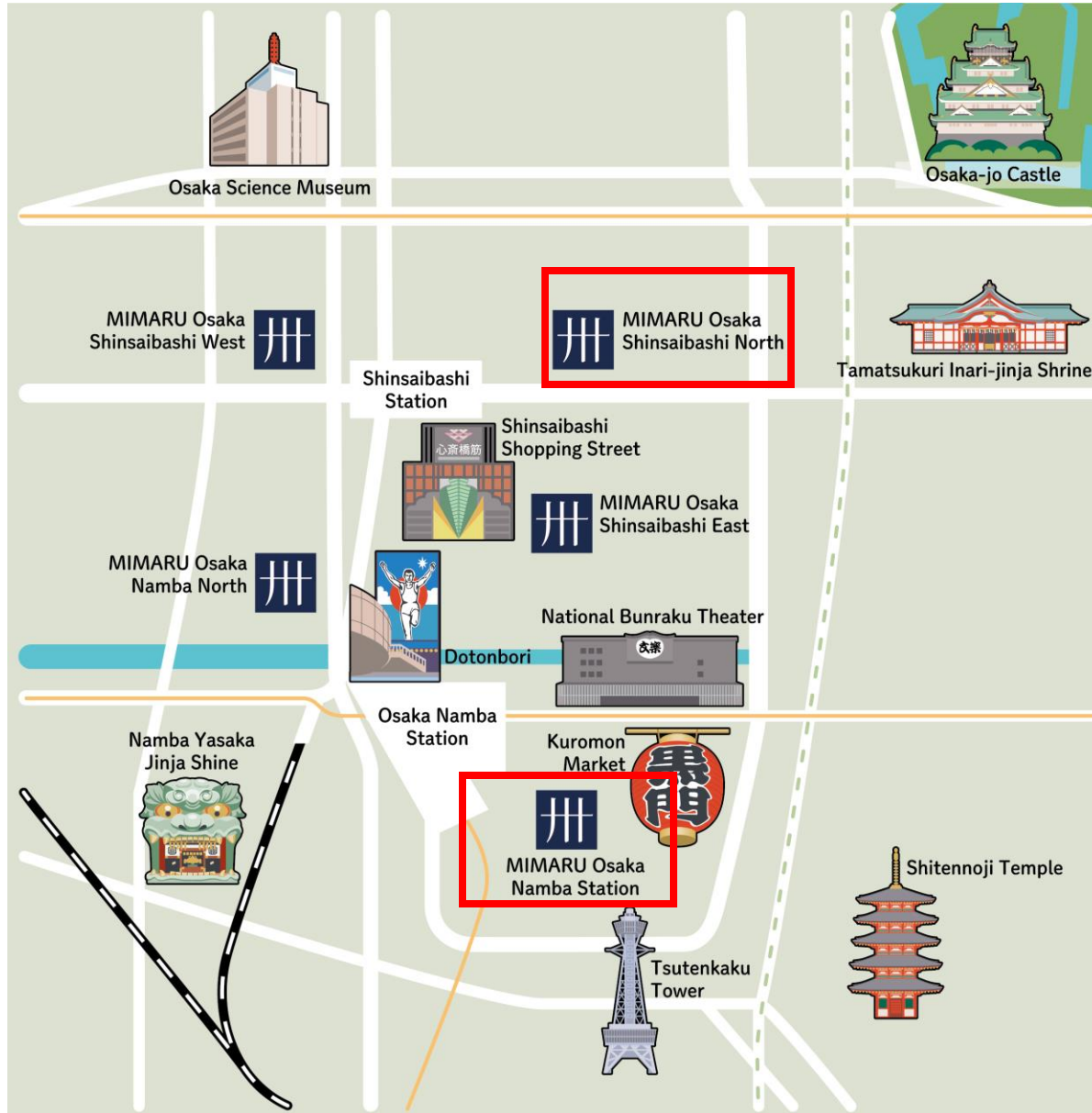


# Recommended MIMARU Stays in OSAKA



MIMARU OSAKA  
SHINSAIBASHI NORTH





MIMARU OSAKA

## NAMBA STATION

<https://mimaruhotels.com/en/hotel/namba-station/>

MIMARU OSAKA

## SHINSAIBASHI NORTH

<https://mimaruhotels.com/en/hotel/shinsaibashi-north/>

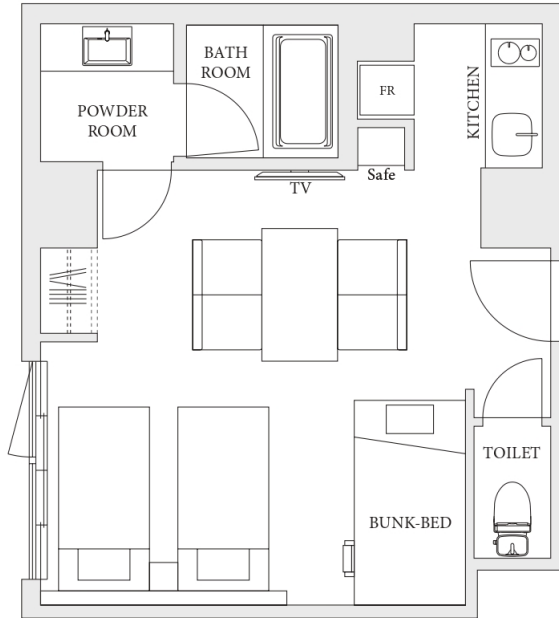
MIMARU大阪難波ステーション

## OSAKA NAMBA STATION

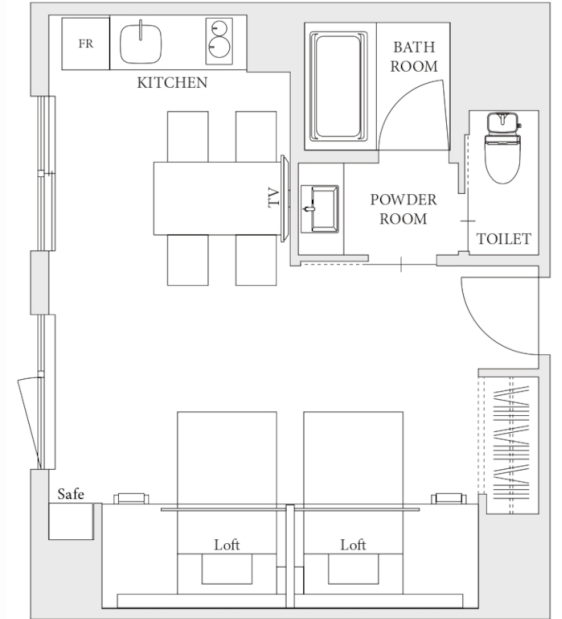
<https://mimaruhotels.com/en/hotel/namba-station/>

Located just a short walk from Nankai Namba Station, our hotel offers an excellent location for educational trips. We are within easy walking distance of Kuromon Market and only about 20 minutes on foot from the vibrant Osaka Shinsekai area, home to the iconic Tsutenkaku Tower.

### Family Apartment (35sqm: 2 single beds, 1 bunk)



### Loft Bed Apartment (36sqm: 2 single beds, 2 loft beds)





MIMARU大阪難波ステーション

# OSAKA NAMBA STATION

<https://mimaruhotels.com/en/hotel/namba-station/>



Exterior view from outside the hotel



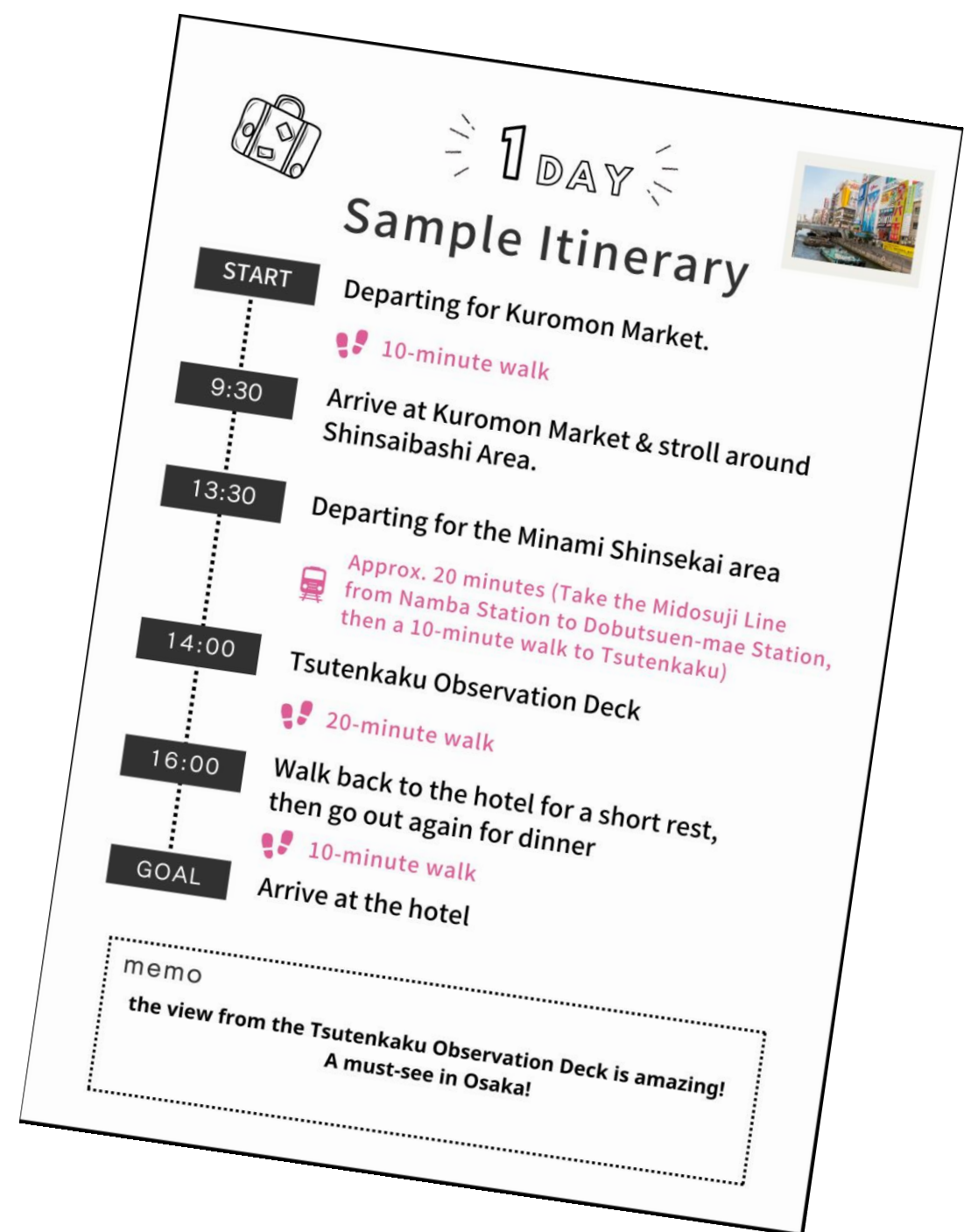
Check-in Counter



Coin Laundry Area



Lobby Area



---

MIMARU大阪心斎橋NORTH

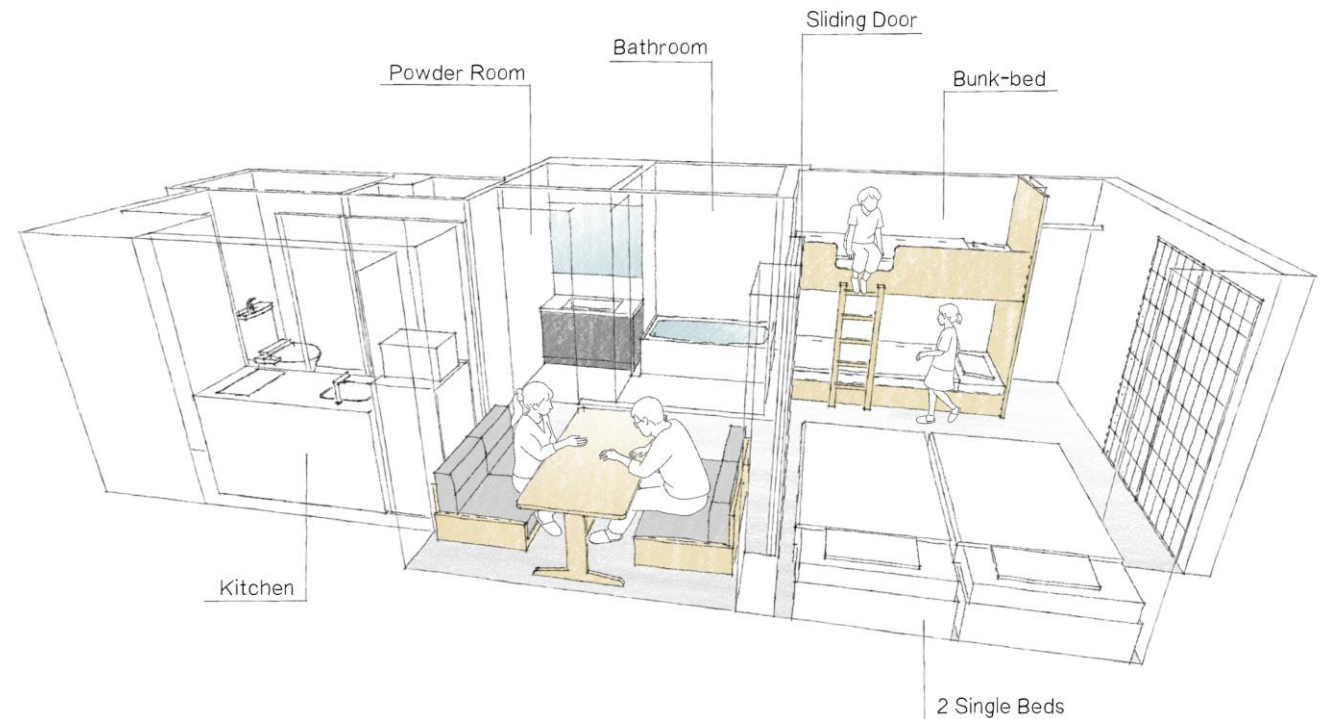
## OSAKA SHINSAIBASHI NORTH

<https://mimaruhotels.com/en/hotel/shinsaibashi-north/>

---

Nestled just 30 minutes away from Osaka Castle, MIMARU Shinsaibashi NORTH welcomes guests with a theme centered around this historic landmark—complete with armor displays. Plus, Universal Studios Japan is also a convenient 30-minute journey away. This makes it an exceptional base for students and teachers alike who wish to explore Osaka's rich history and modern attractions.

### Family Apartment (35sqm: 2 single beds, 1 bunk)





MIMARU大阪心斎橋NORTH

# OSAKA SHINSAIBASHI NORTH

<https://mimaruhotels.com/en/hotel/shinsaibashi-north/>



Exterior view from outside the hotel



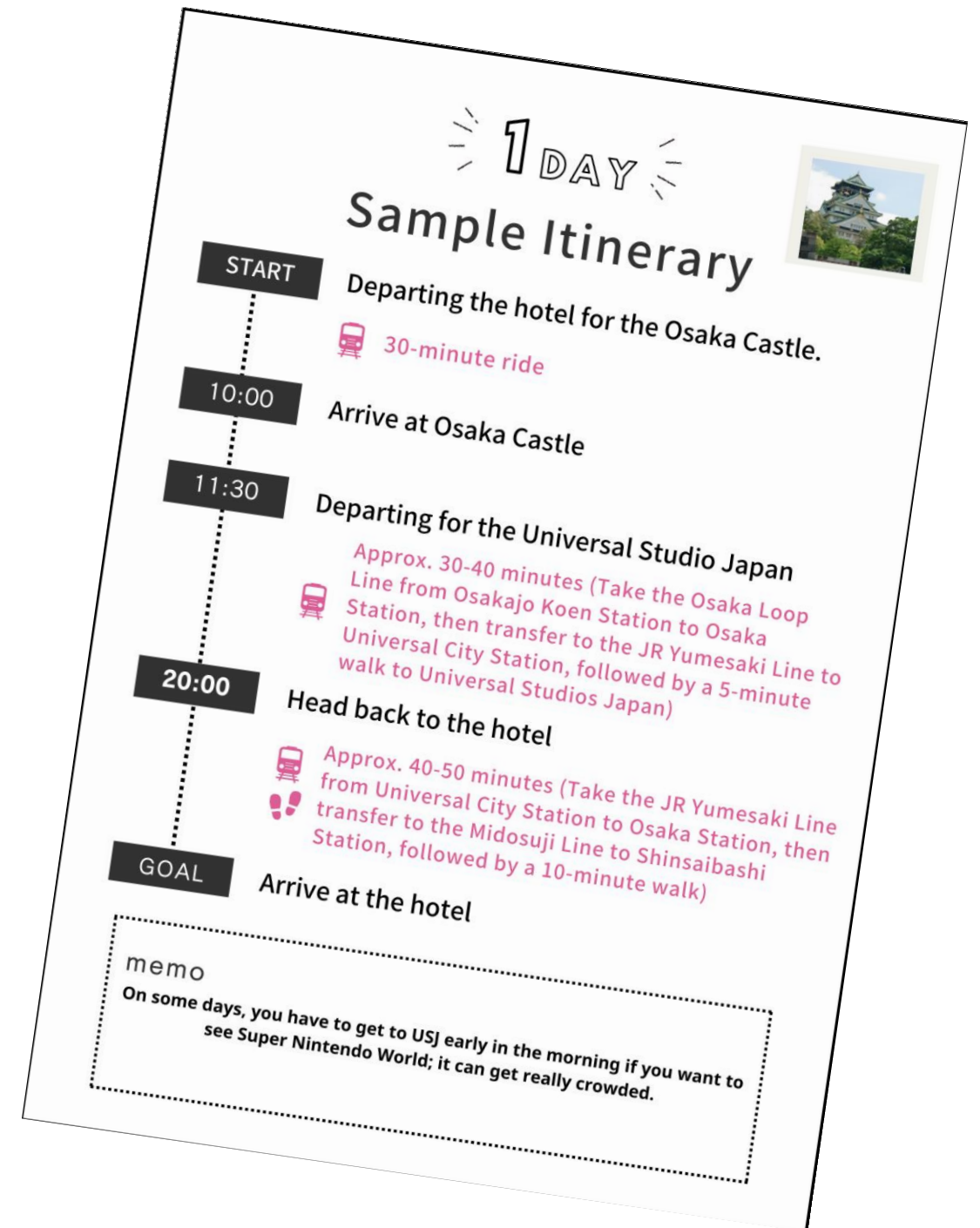
Check-in Counter



Students are greeted by warriors in armor



One-bedroom Apartment (No-shoes allowed)



# FAQ

Q

**Are all rooms non-smoking?**

A

Yes, all rooms are non-smoking. However, smoking areas are available at each facility.

Q

**Have you handled school trips at MIMARU in the past?**

A

Yes, MIMARU was established in 2018, and we have accommodated school trips not only from Australia, New Zealand, and Hawaii but also from within Japan.

Q

**Can male and female students be assigned to separate floors?**

A

Yes, if we receive the rooming list in advance, we will do our best to accommodate your preferences for room assignments.

Q

**Is breakfast service available?**

A

Breakfast service is generally not available. We can provide information about nearby convenience stores and supermarkets. At some of our Kyoto properties, we can arrange Japanese-style bento meals upon request. Please contact us for more details.

Q

**Can I send my luggage to my next destination through the hotel?**

A

Yes, this service can be arranged at the front desk.

Q

**What amenities are included?**

A

Every room comes with a hair dryer, shampoo, conditioner, body soap, as well as face and hand wash. Q-tip sets are available at the hotel reception.

*※Please bring your toothbrush and slippers.*

Q

**Are laundry facilities available?**

A

In our facilities located near Shinmachi Sanjo and Nijo Castle in Kyoto, a free in-room washer/dryer is available. In other locations, we offer coin-operated laundry facilities (for a fee).

Q

**What is the room cleaning policy?**

A

As MIMARU is an apartment-style hotel, our cleaning services may differ from other hotels. Daily cleaning involves replacing bath towels, face towels, and bath mats, in addition to vacuuming. During your stay, cleaning services will be provided every two days starting from the third day (excluding the check-in day). The bathroom and all areas except the kitchen will be cleaned, and the beds will be made.





Link to MIMARU Official Website.  
Please choose “EN” from Menu if shows by Japanese.

For any further questions or to make a reservation at any of our hotels, please don't hesitate to contact us. Or you can reach out to your travel agency for booking and additional information.

 Email: [info-mimaru\\_s@chm.cigr.co.jp](mailto:info-mimaru_s@chm.cigr.co.jp)



MIMARU KYOTO KAWARAMACHI GOJO



APARTMENT HOTEL  
MIMARU

みんなで  
泊まる